

# Ladder Safety Webinar Series: Safety At The Top



# Ladder Safety Webinar Series: Safety At The Top

**Diana Arshin**  
Sr. Product Manager, Climbing



# 1: How to Choose a Ladder

---

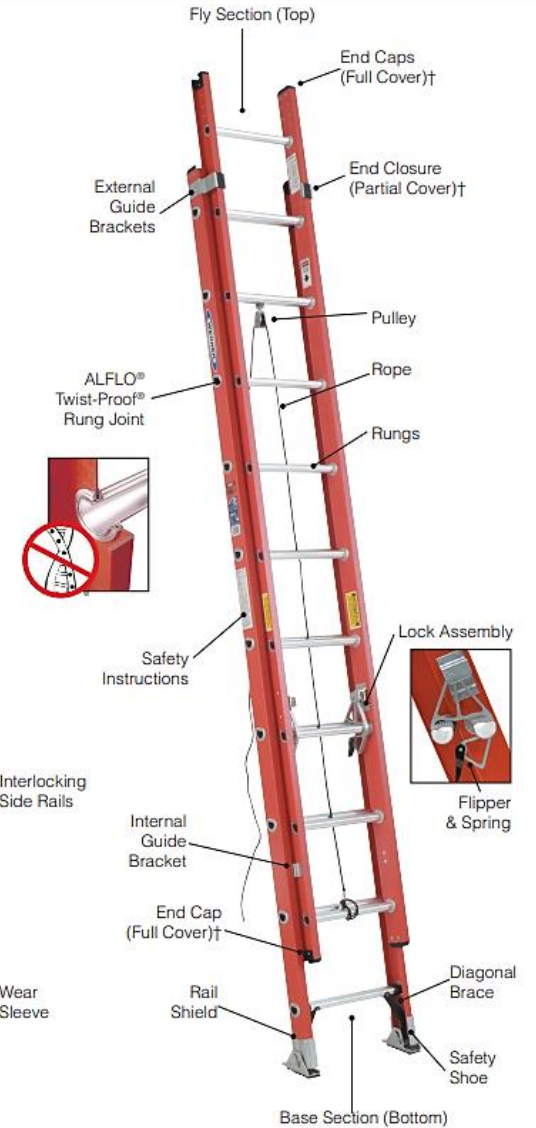


# 2: Ladder Inspection and Set Up



**LOCKTOP™**

- Right-Handed Drill Socket
- Built-In Magnet
- Pipe Channel
- Small Parts Bin
- Paint Can Holder
- Tool Slots



† End Cap's and End Closure's positions differ by ladder models.  
 End Caps - completely cover the rail.  
 End Closures - partially cover the rail, leaving clearance for the mating ladder section.

# 3: Safety While Climbing

## LADDER IDENTIFICATION LABELS

I.D. labels provide important information regarding each ladder's Model Number, Type, Duty Rating, Size, and Highest Standing Level.

**Stepladder  
I.D. Label**

**Orange Label  
For Type IA  
Extra Heavy Duty**

**Extension Ladder  
I.D. Label**

**Gold Label  
For Type IAA  
Special Duty**

**PERFORMANCE**

**LOAD CAPACITY**

**DUTY RATING**

**LADDER SIZE**

**MAXIMUM REACH**

**HIGHEST STANDING LEVEL**  
is the maximum safe working height

- Stepladders: 2<sup>nd</sup> step down from the top
- Extension ladders: 4<sup>th</sup> rung down from the top

**MODEL (ID) NUMBER**

**UPC CODE**

**PERFORMANCE SYSTEM**

<b>225lb</b>	<b>250lb</b>	<b>300lb</b>	<b>375lb</b>
<b>LOAD CAPACITY</b>	<b>LOAD CAPACITY</b>	<b>LOAD CAPACITY</b>	<b>LOAD CAPACITY</b>

Combined weight of user and material should not exceed duty rating

### APPROXIMATE MATERIAL WEIGHTS

Bundle of shingles	70 lbs.
5 gallon roof coating	70 lbs.
5 gallons paint	60 lbs.
Tool box with tools	35 lbs.
Portable sprayer	20 lbs.
Ceiling fan	30 lbs.
3 x 4 window	80 lbs.
Garage door opener	40 lbs.
Basketball hoop	60 lbs.
Sheet of plywood	80 lbs.
(3) 4 x 4's	80 lbs.



# Safety At The Top

Ladder Safety Month

March 2022

# Basic Ladder Safety 101



- ✓ Wear shoes that have non-slip soles.
- ✓ Make sure they are free of mud, oil, or anything slippery.



- ✓ Use fiberglass ladders if there is even a remote possibility of working near electricity or overhead power lines.
- ✓ Fiberglass side rails are electrically non-conductive.



- ✓ Be sure that all ladder feet are on firm, level ground. Solid footing is necessary for safe ladder use.
- \* Ladder shoes equipped with spur plates are for use on penetrable surfaces.
- \* Werner extension ladder shoes are designed to pivot for use on firm, non-slippery surfaces.



- ✓ Use extra caution in windy weather.
- ✓ Climb a ladder in rain or other severe weather only in emergency situations and with the ladder fully secured.
- ✓ Have another person hold the ladder.



- ✓ Check for and replace frayed or damaged electrical cords.
- ✓ Use double insulated power tools as well as grounded cords and outlets.



- ✓ Be careful if you use a tool belt. Make sure that tools do not catch on the ladder when climbing.



# Basic Ladder Safety 101



- ✘ Never position the ladder where it blocks foot traffic, work vehicles, or where it could be bumped by a door.

If it is necessary to use a ladder in front of a door, lock or barricade the door and put up a caution sign.



- ✘ Never drop or throw ladders, doing so can damage or weaken them and cause serious injury to others.



- ✘ Never place or use a ladder on slippery surfaces or on uneven ground that may cause an accident.



- ✘ Never leave a ladder unattended. This may present a hazard to others in the area.

- ✘ Do not allow children to play or climb on ladders.



- ✘ Never use any ladder that has been exposed to fire, acids, caustics or other strong chemicals. These may damage or weaken the ladder.



- ✘ Don't move the ladder with materials on it. They may fall and cause damage or an injury.





# Step Ladders

---



# At The Top – DO



## Do:

- Face ladder when climbing
- Maintain 3 points of contact
- Stay near middle – Belt buckle in center
- Utilize accessories



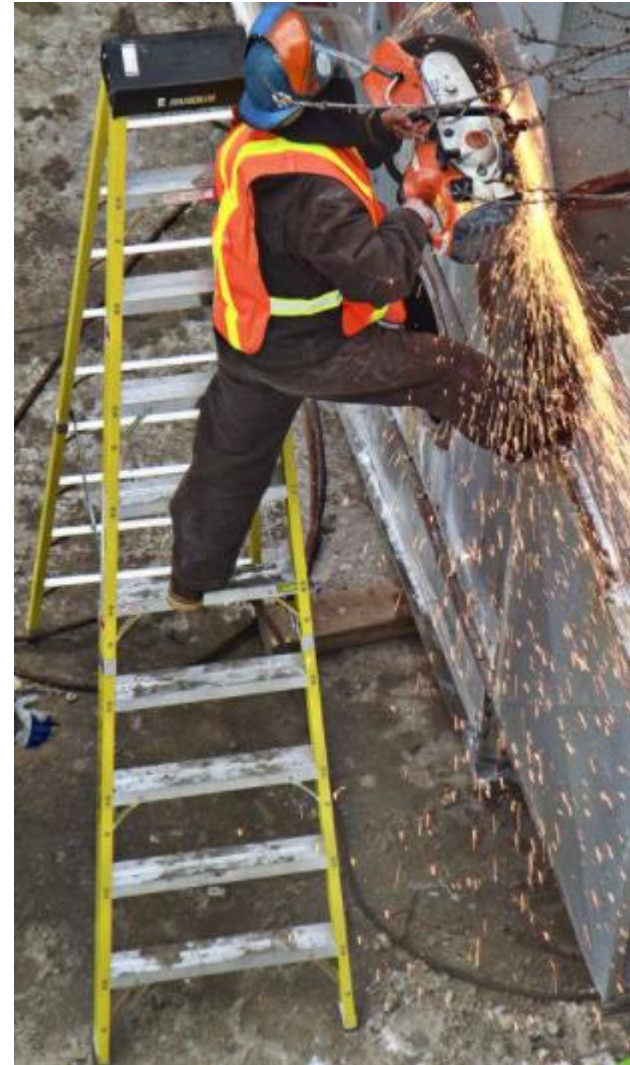
**WERNERCO™**

# At The Top – DO NOT



## Do Not:

- Use top two rungs
- “Walk” the ladder
- Face backwards
- Lean the ladder



# Leaning Ladders



# Podium Ladders

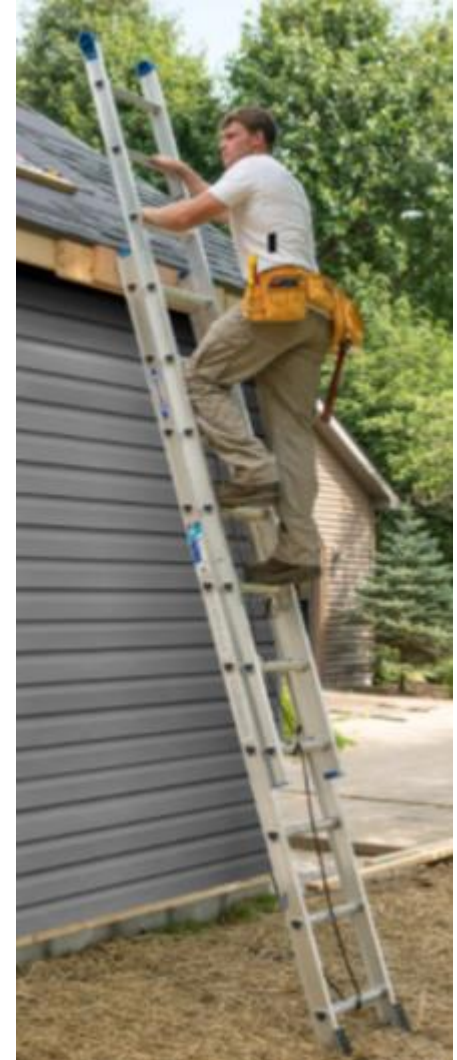


# Extension Ladders – DO



## Do:

- Face Forward
- Tie off the top of the ladder when accessing
- Extend 3' above the landing



# At The Top – DO NOT



## Do Not:

- Use top three rungs
- Face backwards
- Don't Reach! – Keep belt between rails
- Carry excess tools



# Multi-Use Ladders



Double Sided Ladder



Wall Ladder



Stairway Ladder

Straight Ladder



Scaffold Brackets

Adopt Do's & Don'ts!



# Safety At The Top | Summary

---

1. Choose the ***type of ladder*** based on your environment / surroundings.
2. Choose the ***ladder height*** based on where you need to reach and remember the rules for how high you can safely climb.
3. Remember where you can step ***at the top*** based on what ladder you're using.
4. Know ***limitations*** on the different styles of ladders.
5. ***Ask*** for training!

A construction site at dusk or dawn. A worker is on a tall ladder on the left. In the center, two workers are near a KNAUF A1000 cabinet. To the right, a white pickup truck is parked with another worker nearby. The background shows the steel frame of a building under construction.

**Any Questions?**

# American Ladder Institute

[americanladderinstitute.org](http://americanladderinstitute.org) • (312) 321-6806 • [info@americanladderinstitute.org](mailto:info@americanladderinstitute.org)

[laddersafetymonth.com](http://laddersafetymonth.com)  
[laddersafetytraining.org](http://laddersafetytraining.org)

@AmericanLadderInstitute  
@laddersafetymonth

